



CONTACTS
PO Box 52
West Perth
WA 6872 Australia

ABN 96 095 684 389

ASX : FNT

PHONE
+61 (08) 9295 0388
FAX
+61 (08) 9295 3480

EMAIL
info@frontierresources.com.au
WEBSITE
www.frontierresources.com.au

ASX Limited
Company Announcements Office

18th April 2013

Assay Results for Andewa Drill Holes ADH 011, 016, 017 and 018

Frontier Resources Ltd announces assay results for drill holes ADH011 (118m-700.6m), ADH016 (499.4m-925.8m), ADH017 and ADH018, remaining from the 2012 drilling program at the Andewa porphyry gold - copper Project (EL 1345), in Papua New Guinea.

- Each diamond core drill hole cut long intercepts of low grade gold mineralisation and the best 'higher' grade intercepts were:
 - ADH011 with 160m of 0.13 g/t gold (including 2m of 2.24 g/t gold), plus 101m of 0.14 g/t gold (including 2m of 0.84 g/t gold plus 10m of 0.48 g/t gold), plus 6m of 0.46 g/t gold.
 - ADH016 with 12m of 0.96 g/t gold (including 2m of 3.93 g/t gold), plus 5.6m of 0.50 g/t gold.
 - ADH017 with 232m of 0.16 g/t gold plus 2m of 3.95 g/t gold + 0.11% copper.
 - ADH018 with 100m of 0.13 g/t gold (including 6m of 0.38 g/t gold + 0.12% copper).
- Peak assay results (generally in different samples) were:
 - ADH011: 2m of 2.24 g/t gold, 0.09% copper, 31ppm molybdenum and 17.5 g/t silver.
 - ADH016: 1m of 5.90 g/t gold, 0.13% copper, 86ppm molybdenum and 48 g/t silver.
 - ADH017: 2m of 3.95 g/t gold, 0.25% copper and 623ppm molybdenum.
 - ADH018: 2m of 0.79 g/t gold, 0.28% copper and 70ppm molybdenum.
- Weighted assay intercepts for these holes are located in Table 1, ADH assay summaries for the drilling to date are in Table 2 and collar location and orientation information are in Table 3.
- Gold assays are plotted schematically down the drill hole traces on topography, total magnetic intensity (TMI) and Reduced to the Pole TMI backgrounds in Figures 1-3.
- ADH016 and ADH011 are both entering deeper gold mineralisation at the end of hole, with 2.6m grading 0.93 g/t gold (+ 6 g/t silver) and 10.0m grading 0.12g/t gold (within a 24.6m wide zone of arsenic anomalism), respectively.
- Systematic alteration (and mineralogical) studies are continuing on all the ADH drill holes, with this work to provide vectors to the better part of the gold porphyry system.
- Forty holes have been completed by Frontier at Andewa for 12,466.1m, including eighteen for 9842.4m since mid-2011, with 4,020.4m by the Newcrest Mining Ltd Joint Venture since mid-2012.
- Newcrest is earning a 60% equity in EL 1345 (Andewa) and EL 1951 (Mt Schrader), by sole funding A\$19.25 million in exploration within 4 years (of which they have now sole funded more than A\$6 million). After Earn-In, Frontier can be deferred carried to completion of a Feasibility Study, repayable from 50% of mine profit. Newcrest may acquire an additional 12% equity in the project for a payment based on the reserves and resources defined in the Feasibility and prior to the 'Decision to Mine'.
- Newcrest is determining exploration budgets for financial year 2014 and will advise Frontier regarding work proposed for the Andewa Project in due course.

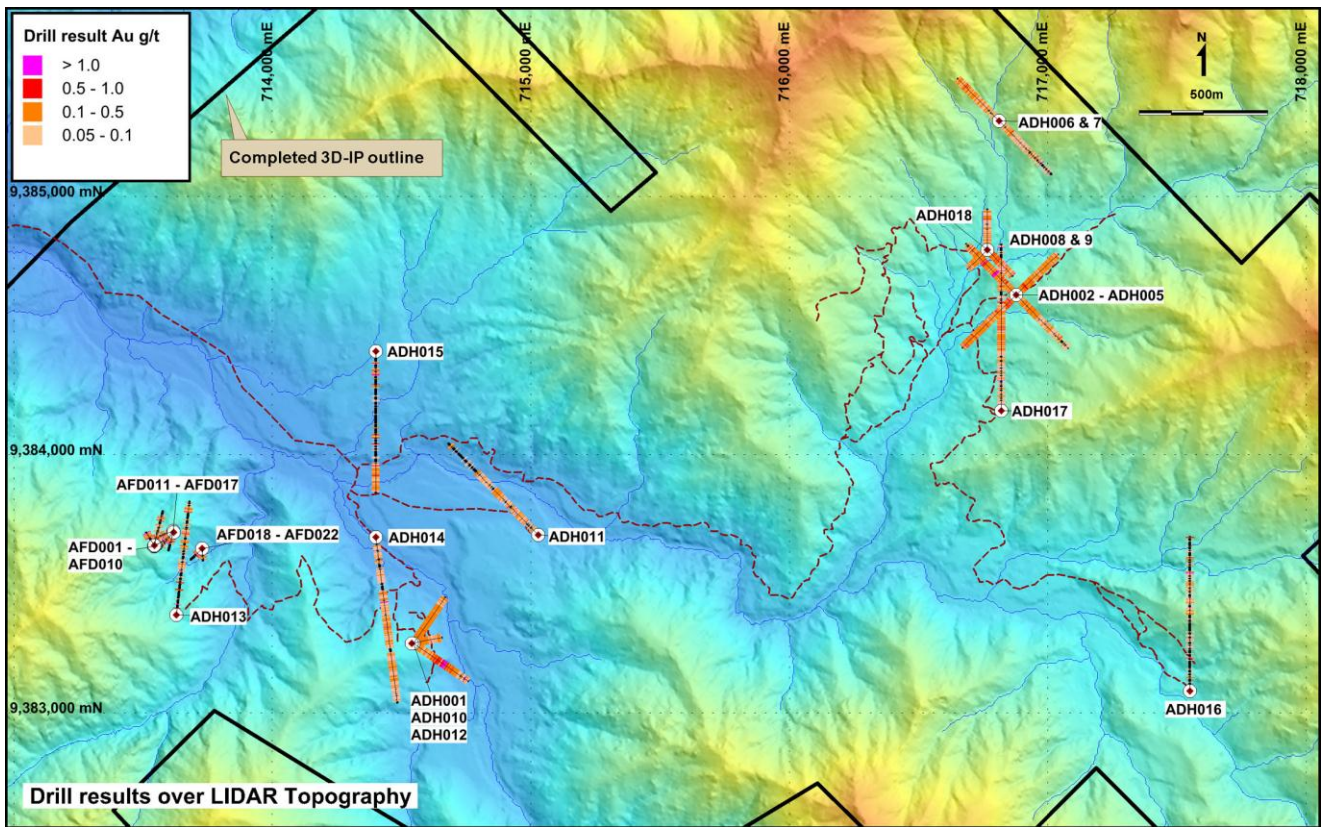


Figure 1. EL 1345 soil + 3D-IP grid boundary on a Lidar topographic plan showing the location of all drill holes to date with gold assays plotted down the drill hole trace.

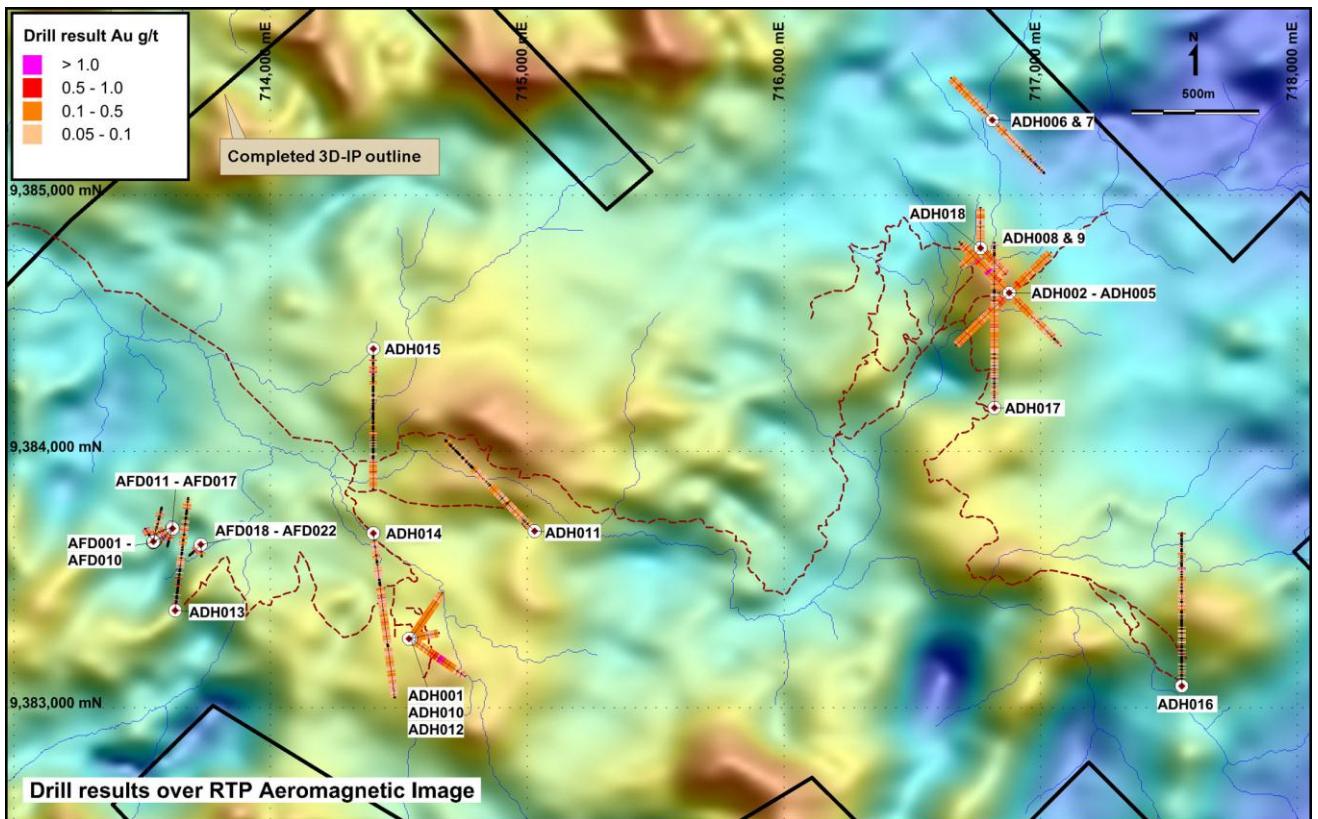


Figure 2. Total magnetic intensity reduced to the pole (TMI-RTP) image showing the location of all drill holes to date with gold assays plotted down the drill hole trace.

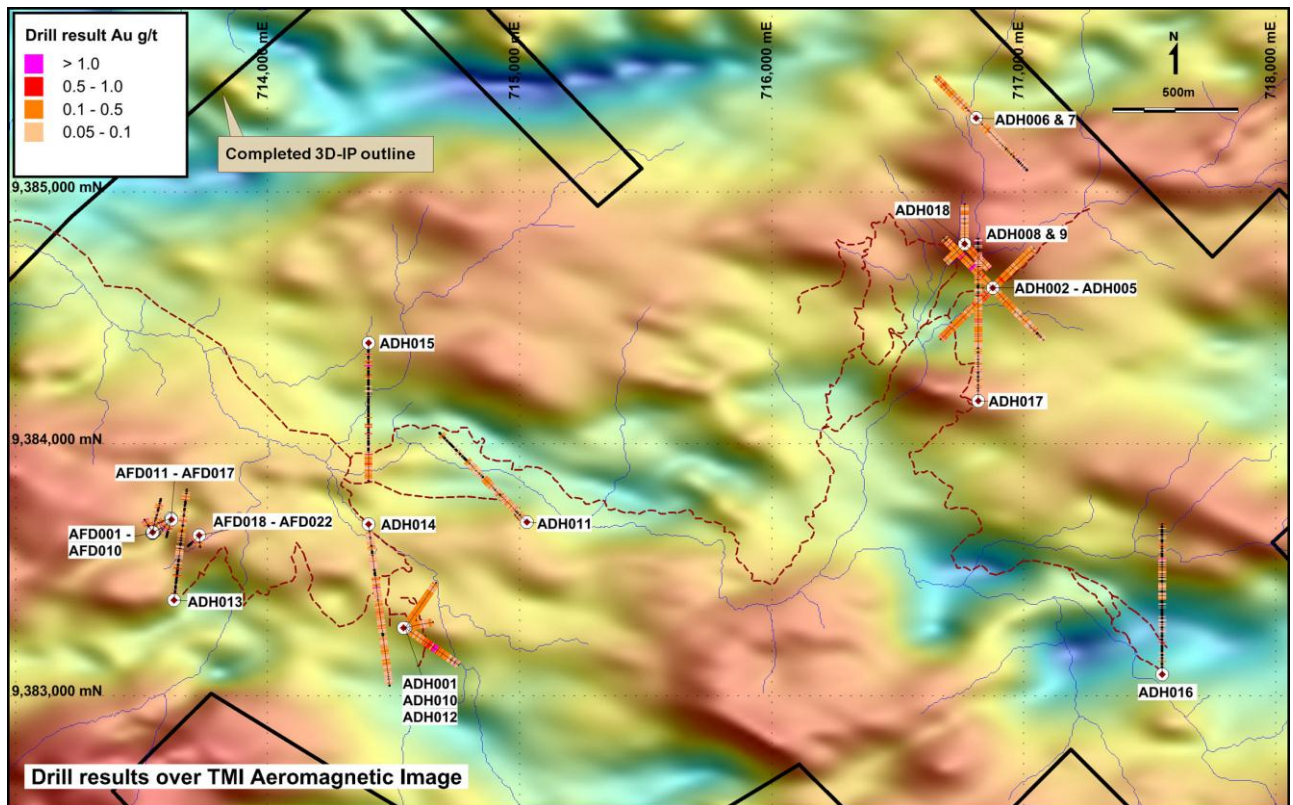


Figure 3. Total magnetic intensity (TMI) image showing the location of all drill holes to date with gold assays plotted down the drill hole trace.

Hole Number and End of Hole Depth	Intercept Length	Gold (g/t)	Copper (ppm)	Moly. (ppm)	From (m)	To (m)	Nominal Gold Cut Off Grade (g/t)
ADH011 700.6m	697.1 m	0.08	290	1	3.5	700.6	nil
incl.	64.0 m	0.07	222	0	23.0	87.0	0.05
plus	101.0 m	0.14	324	2	87.0	188	0.10
incl.	2.0 m	0.84	518	0	98.0	100.0	0.50
plus	10.0 m	0.48	419	5	178	188	0.10
plus	160.0 m	0.13	361	1	188	348	0.10
incl.	2.0 m	2.24	227	3	226	228	2.00
plus	134.0 m	0.08	327	1	348	482	0.05
incl.	6.0 m	0.46	693	2	476	482	0.20
plus	10.0 m	0.12	263	1	678	688	0.10
ADH016 925.8m	918.7 m	0.06	260	4	7.1	925.8	nil
incl.	521.0 m	0.07	319	6	197.4	718.4	250 Cu
incl.	9.3 m	0.14	338	2	460.2	469.5	0.10
plus	12.0 m	0.96	379	3	706.4	718.4	0.20
incl.	2.0 m	3.93	752	11	706.4	708.4	1.00
plus	5.6 m	0.50	224	2	923.2	925.8	0.50
ADH017 1000.4m	993.3 m	0.10	276	4	7.1	1000.4	nil
incl.	346.9 m	0.06	213	2	7.1	354.0	nil
plus	30.0 m	0.13	612	41	354.0	384.0	0.1
plus	16.0 m	0.21	124	12	384.0	400.0	0.2
plus	232.0 m	0.16	470	5	400.0	632.0	0.05
plus	2.0 m	3.95	1,092	1	986.0	988.0	3.0
ADH018 239.7m	238.2 m	0.12	541	5	1.5	239.7	nil
incl.	28.0 m	0.17	598	12	16.0	44.0	0.10
plus	56.0 m	0.12	512	3	44.0	100.0	0.05
plus	10.0 m	0.19	771	7	106.0	116.0	0.10
plus	66.0 m	0.07	388	2	116.0	182.0	0.05
plus	18.0 m	0.37	1495	8	182.0	200.0	0.10
plus	39.7 m	0.08	490	5	200.0	239.7	0.05

Andewa Complete ADH diamond drill hole gold, copper and moly intercepts							
Hole Number	Intercept Length	Gold (g/t)	Copper (%)	Moly. (ppm)	From (m)	To (m)	Nominal Gold Cut Off Grade
ADH001	398.8 m	0.35	0.15	8	0.0	398.8	Nil
incl.	190.1 m	0.55	0.24	8	135	325.3	0.1
incl.	106.6 m	0.75	0.30	6	139.2	245.8	0.4
incl.	61.0 m	0.94	0.35	8	184.8	245.8	0.5
ADH002	372.0 m	0.36	0.10	9	0.0	372.0	Nil
incl.	268 m	0.43	0.11	12	0.0	268.0	0.1
Sum below =	114.0 m	0.74	0.20	18	5.1	268.0	0.1
incl.	12.0 m	0.50	0.15	0	5.1	17.1	0.5
plus	10.0 m	0.28	0.29	38	64.6	74.6	0.2
plus	41.0 m	0.51	0.18	23	82.6	123.6	0.2
plus	19.0 m	1.86	0.39	14	154.0	173.0	0.5
plus	32.0 m	0.61	0.11	15	236.0	268.0	0.3
incl.	6.0 m	1.30	0.24	6	246.0	252.0	1.0
ADH003	409.1 m	0.30	0.08	9	0.0	409.1	Nil
incl.	7.3 m	2.16	0.11	3	46.8	54.1	0.5
incl.	1.0 m	9.40	0.26	7	52.0	53.0	5.0
plus	51.2 m	0.36	0.12	19	346.6	397.8	0.2
ADH004	404.6 m	0.24	0.06	9	0.0	404.6	Nil
ADH005	296.2 m	0.29	0.09	6	21.4	317.6	Nil
ADH006	353.5 m	0.13	0.02	2	0.0	353.5	Nil
ADH007	408.4 m	0.09	0.02	1	0.0	408.4	Nil
ADH008	403.5 m	0.27	0.05	5	0.0	403.5	Nil
incl.	317.8 m	0.31	0.06	5	7.1	324.9	0.1
incl.	36.5 m	0.77	0.08	4	44.5	81.0	0.3
incl.	6.4 m	2.75	0.08	22	46.1	52.5	1.0
plus	63.0 m	0.27	0.09	13	81.0	144.0	0.2
plus	180.9 m	0.26	0.05	3	144.0	324.9	0.2
incl.	1.0 m	2.19	0.25	25	159.0	160.0	2.0
incl.	1.5 m	2.06	0.23	3	196.5	198.0	2.0
incl.	1.0 m	2.94	0.46	2	201.2	202.2	2.0
incl.	2.2 m	1.10	0.14	2	226.0	228.2	1.0
incl.	1.1 m	1.38	0.08	4	241.6	242.7	1.0
ADH009	407.9 m	0.23	0.06	8	0.0	407.9	Nil
incl.	53.5 m	0.19	0.07	5	9.0	62.5	0.1
plus	58.5 m	0.33	0.09	5	62.5	121.0	0.2
plus	64.0 m	0.27	0.05	5	121.0	185.0	0.1
plus	9.3 m	0.72	0.14	2	219.7	229.0	0.3
plus	7.4 m	0.33	0.24	49	315.8	323.2	0.2
plus	3.0 m	1.15	0.05	5	396.0	399.0	0.7
ADH010	332.0 m	0.21	0.16	13	0.0	332.0	Nil
incl.	141.0 m	0.28	0.17	6	0.0	141.0	0.1
plus	137.0 m	0.18	0.17	16	141.0	278.0	0.1
incl.	35.0 m	0.40	0.15	6	43.0	78.0	0.3
incl.	1.0 m	1.99	0.14	12	54.0	55.0	1.0
incl.	2.0 m	0.66	0.29	8	86.0	88.0	0.5
incl.	16.5 m	0.37	0.29	6	94.5	111.0	0.3
plus	20.0 m	0.11	0.11	16	288.0	308.0	0.1
and	2.0 m	0.17	0.28	26	326.0	328.0	0.1

Andewa Complete ADH diamond drill hole gold, copper and moly intercepts							
Hole Number	Intercept Length	Gold (g/t)	Copper (%)	Moly. (ppm)	From (m)	To (m)	Nominal Gold Cut Off Grade
ADH011	697.1 m	0.08	290	1	3.5	700.6	nil
incl.	64.0 m	0.07	222	0	23.0	87.0	0.05
plus	101.0 m	0.14	324	2	87.0	188	0.10
incl.	2.0 m	0.84	518	0	98.0	100.0	0.50
plus	10.0 m	0.48	419	5	178	188	0.10
plus	160.0 m	0.13	361	1	188	348	0.10
incl.	2.0 m	2.24	227	3	226	228	2.00
plus	134.0 m	0.08	327	1	348	482	0.05
incl.	6.0 m	0.46	693	2	476	482	0.20
Increasing As	10.0 m	0.12	263	1	678	688	0.10
ADH012	377.0 m	0.20	0.13	14	0.0	377.0	Nil
incl.	20.0 m	0.40	0.25	20	347.0	367.0	0.3
plus	173.0 m	0.12	0.10	16	491.0	664.0	0.1
ADH013	625.5 m	0.19	0.02	1.6	0.0	625.5	Nil
incl.	4.0 m	2.99	0.03	1.6	28.0	32.0	1.0
plus	2.0 m	0.51	0.02	2.4	38.0	40.0	0.5
plus	2.0 m	1.89	0.02	2.1	57.6	59.6	1.0
plus	2.0 m	0.66	0.02	0.9	179.6	181.6	0.5
plus	2.0 m	0.5	0.03	1.5	192.7	194.0	0.5
plus	2.0 m	0.96	0.02	0.0	139.6	141.6	0.5
plus	8.5 m	0.23	0.05	4.2	375.5	384.0	0.1
plus	16.8 m	0.17	0.03	1.6	397.1	413.9	0.1
plus	9.4 m	6.68	0.03	1.6	443.6	453.0	0.1
incl.	3.0 m	20.41	0.05	2.9	448.5	451.5	1.0
incl.	1.5 m	39.30	0.03	3.2	450.0	451.5	39.0
plus	24.0 m	0.18	0.02	2.1	566.5	590.5	0.1
incl.	1.0 m	0.60	0.05	8.7	568.0	569.0	0.5
ADH014	1,004.0 m	0.09	0.05	10.3	0.0	1,004.0	Nil
incl.	2.0 m	0.49	0.04	2.0	54.3	56.3	0.20
plus	2.0 m	0.31	0.05	1.8	112.0	114.0	0.20
plus	2.0 m	0.26	0.06	20.1	124.0	126.0	0.20
plus	2.0 m	0.77	0.01	4.1	138.0	140.0	0.20
plus	1.4 m	0.20	0.02	10.3	140.0	141.4	0.20
plus	1.1 m	0.28	0.03	3.2	211.0	212.1	0.20
plus	2.0 m	0.21	0.05	3.2	234.9	236.9	0.20
plus	2.0 m	0.08	0.06	4.6	236.9	238.9	30 Ag
plus	2.0 m	1.55	0.06	7.4	392.0	394.0	1.00
plus	2.0 m	0.31	0.04	6.8	428.0	430.0	0.20
plus	2.0 m	0.24	0.05	4.4	458.0	460.0	0.20
plus	2.0 m	0.27	0.10	15.9	542.0	544.0	0.20
plus	2.0 m	1.17	0.06	3.3	544.0	546.0	1.00
plus	6.0 m	0.23	0.14	82.5	550.0	556.0	0.20
plus	8.0 m	0.26	0.18	22.2	620.0	628.0	0.20
plus	2.0 m	0.22	0.09	5.1	662.0	664.0	0.20
plus	2.0 m	0.33	0.07	21.3	720.0	722.0	0.20
plus	2.0 m	0.54	0.09	14.9	728.0	730.0	0.50
plus	2.0 m	0.21	0.11	26.8	788.6	790.6	0.20
plus	2.0 m	0.21	0.14	13.8	804.6	806.6	0.20
and	16.0 m	0.09	0.10	22.2	892.0	908.0	Stg Mo, As, Sb

Andewa Complete ADH diamond drill hole gold, copper and moly intercepts							
Hole Number	Intercept Length	Gold (g/t)	Copper (%)	Moly. (ppm)	From (m)	To (m)	Nominal Gold Cut Off Grade
ADH015	852.7 m	0.08	0.02	2.4	0.0	852.7	Nil
incl.	2.0 m	0.52	0.02	0.9	68.0	70.0	0.50
plus	2.0 m	0.82	0.03	1.8	112.0	114.0	0.50
plus	2.0 m	1.34	0.09	2.3	130.0	132.0	1.00
plus	12.0 m	0.54	0.01	2.6	134.0	146.0	0.50
plus	2.0 m	1.26	0.01	1.9	142.0	144.0	1.00
plus	2.0 m	0.30	0.01	0.7	164.0	166.0	0.30
plus	2.0 m	0.58	0.01	0.8	196.0	198.0	0.50
plus	4.0 m	0.18	0.03	1.2	294.0	298.0	0.10
plus	2.0 m	0.40	0.01	0.9	336.0	338.0	0.40
plus	2.0 m	0.43	0.03	0.8	380.0	382.0	0.40
plus	6.0 m	0.42	0.03	0.8	502.0	508.0	0.10
incl.	2.0 m	1.00	0.03	0.9	502.0	504.0	1.00
plus	6.0 m	0.54	0.02	0.8	516.0	522.0	0.10
plus	2.0 m	0.55	0.02	1.4	558.0	560.0	0.50
plus	2.0 m	0.83	0.09	7.2	688.0	690.0	0.50
plus	62.0 m	0.20	0.06	6.8	702.0	764.0	0.10
plus	12.0 m	0.39	0.08	5.9	738.0	750.0	0.10
plus	14.0 m	0.20	0.05	6.0	750.0	764.0	0.10
plus	28.0 m	0.13	0.06	11.1	782.0	810.0	0.10
plus	26.0 m	0.13	0.07	17.2	814.0	840.0	0.10
ADH016	918.7 m	0.06	260	4	7.1	925.8	nil
incl.	521.0 m	0.07	319	6	197.4	718.4	250 Cu
incl.	9.3 m	0.14	338	2	460.2	469.5	0.10
plus	12.0 m	0.96	379	3	706.4	718.4	0.20
incl.	2.0 m	3.93	752	11	706.4	708.4	1.00
plus	5.6 m	0.50	224	2	923.2	925.8	0.50
ADH017	993.3 m	0.10	0.03	4	7.1	1000.4	nil
incl.	346.9 m	0.06	0.02	2	7.1	354.0	nil
plus	30.0 m	0.13	0.06	41	354.0	384.0	0.1
plus	16.0 m	0.21	0.12	12	384.0	400.0	0.2
plus	232.0 m	0.16	0.05	5	400.0	632.0	0.05
plus	2.0 m	3.95	0.11	1	986.0	988.0	3.0
ADH018	238.2 m	0.12	541	5	1.5	239.7	nil
incl.	28.0 m	0.17	598	12	16.0	44.0	0.10
plus	56.0 m	0.12	512	3	44.0	100.0	0.05
plus	10.0 m	0.19	771	7	106.0	116.0	0.10
plus	66.0 m	0.07	388	2	116.0	182.0	0.05
plus	18.0 m	0.37	1495	8	182.0	200.0	0.10
plus	39.7 m	0.08	490	5	200.0	239.7	0.05

Core from the drill holes was split in half longitudinally by a diamond bladed cutoff saw onsite at Andewa. Samples were shipped to Lae for preparation and were assayed by Intertek (Jakarta) by fire assay (50g charge) for gold and by four acid digest with combined ICP-OES / MS package for 45 elements. Suitable internal standards were used as appropriate.

For additional information relating to Frontier Resources, please visit the Company's website at www.frontierresources.com.au.

FRONTIER RESOURCES LTD



P.A. McNeil, M.Sc.

CHAIRMAN/MANAGING DIRECTOR

The information in this report that relates to Exploration Results and Mineral Resources is based on information compiled by, or compiled under the supervision of Peter A. McNeil - Member of the Aust. Inst. of Geoscientists. Peter McNeil is the Managing Director of Frontier Resources, who consults to the Company. Peter McNeil has sufficient experience which is relevant to the type of mineralisation and type of deposit under consideration to qualify as Competent Person as defined in the 2004 Edition of the Australasian Code of Reporting Exploration Results, Mineral Resources and Ore Resources. Peter McNeil consents to the inclusion in the report of the matters based on the information in the form and context in which it appears

EL 1345 - Andewa Drill Hole Location and Orientation Information						
HOLE ID	EOH DEPTH	AZIM (AMG)	Inclination (degrees)	EASTING (m)	NORTHING (m)	RL (m)
ADH 001	398.8m	125	-50	714546	9383269	278
ADH 002	389.6m	316	-45	716878	9384618	386
ADH 003	409.1m	226	-45	716878	9384618	386
ADH 004	404.6m	136	-45	716878	9384618	386
ADH 005	317.6m	046	-45	716878	9384618	386
ADH 006	353.5m	316	-50	716811	9385292	489
ADH 007	408.4m	136	-45	716811	9385292	489
ADH 008	403.5m	226	-75	716766	9384793	278
ADH 009	407.0m	136	-70	716766	9384793	278
ADH 010	336.0m	028	-50	714546	9383269	190
ADH 011	700.9m	316	-45	715029	9383689	202
ADH 012	667.5m	080	-80	714540	9383270	278
ADH 013	625.5m	007	-45	713628	9383379	341
ADH 014	1004.0m	173	-50	714400	9383680	163
ADH 015	850.5m	180	-50	714400	9384400	215
ADH 016	925.8	0/360	-50	717549	9383084	339
ADH 017	1,000.4m	0/360	-50	716825	9384165	421
ADH 018	239.7m	0/360	-50	716766	9384793	320
Sub total 7/2011 - 12/2012 =			9,842.4	m		
AFD001	197.9m	014	-45	713542	9383644.5	374
AFD002	55.6m	014	-55	713542	9383644.5	374
AFD003	81.2m	014	-65	713542	9383644.5	374
AFD004	97.8m	014	-70	713542	9383644.5	374
AFD005	153.4m	014	-75	713542	9383644.5	374
AFD006	56.9m	060	-45	713547	9383648	374
AFD007	49.5m	060	-55	713546	9383648	374
AFD008	82.4m	060	-65	713547	9383648	374
AFD009	82.3m	328	-42.5	713544	9383646	374
AFD010	108.7m	328	-57.5	713544	9383648	374
AFD011	321.6m	248.5	-75	713617	9383704	315
AFD012	100.3m	194	-45	713617	9383704	315
AFD013	151.5m	194	-60	713617	9383704	315
AFD014	170.9m	194	-75	713617	9383704	315
AFD015	107.65m	220	-45	713617	9383704	315
AFD016	142.5m	220	-55	713618	9383699	315
AFD017A	64.9m	220	-70	713618	9383699	315
AFD017B	183.9m	220	-70	713618	9383704.5	315
AFD018	70.5m	227	-45	713729	9383636	273
AFD019	120.2m	227	-60	713729	9383636	273
AFD020	114m	227	-75	713729	9383636	273
AFD021	69.0m	180	-50	713729	9383636	273
AFD022	41.0m	177	-65	713729	9383636	273
Sub total 2008/2009 =			2623.65	m		
Total to Date =			12,466.1	m		