



CONTACTS
PO Box 52
West Perth
WA 6872 Australia

ABN 96 095 684 389

PHONE
+61 (08) 9295 0388
FAX
+61 (08) 9295 3480

EMAIL
info@frontierresources.com.au
WEBSITE
www.frontierresources.com.au

ASX Limited
Company Announcements Office

5th March 2012

Drill Holes ADH 008–009 Contain Gold Mineralisation from Surface to End of Hole, Demonstrating the Excellent Size Potential of the Andewa Project in Papua New Guinea

Frontier Resources Ltd is pleased to announce that diamond drill holes ADH 008 and ADH 009 at the Andewa Project, Papua New Guinea have intersected gold mineralised intrusive and volcanic lithologies from the surface to the bottom of the holes (at approximately 390m below surface). The gold and copper grades encountered to date have been modest, but the intercepts and their extensive lengths reflect a very large and pregnant system with excellent prospectivity.

The last sample in hole ADH 009 assayed 1.0m of 0.55 g/t gold + 0.11% copper (from 406 to 407m downhole).

Frontier remains convinced that additional drilling will intersect substantial gold and copper mineralisation through drilling with both our large track mounted rigs that are now onsite.

The CS1800 is drilling hole ADH012 at an 80 degree inclination to the ENE, targeting a high intensity chargeability neck then into the main chargeability anomaly. Hole ADH 010 was re-commenced a week ago, after the rig was repaired. It is also on pad 1 targeting the strike extension of the gold -copper mineralisation intersected hole ADH001.

Table 1 shows the weighted assay averages from both drill holes, including the entire hole at no cutoff grade and various intercepts using different cut off grades from 0.1 to 0.5 g/t gold (and bulking a minor amount of internal 'waste'). Hole collar / orientation information is located in Table 2.

Peak assays from diamond core drill hole ADH 008 were:

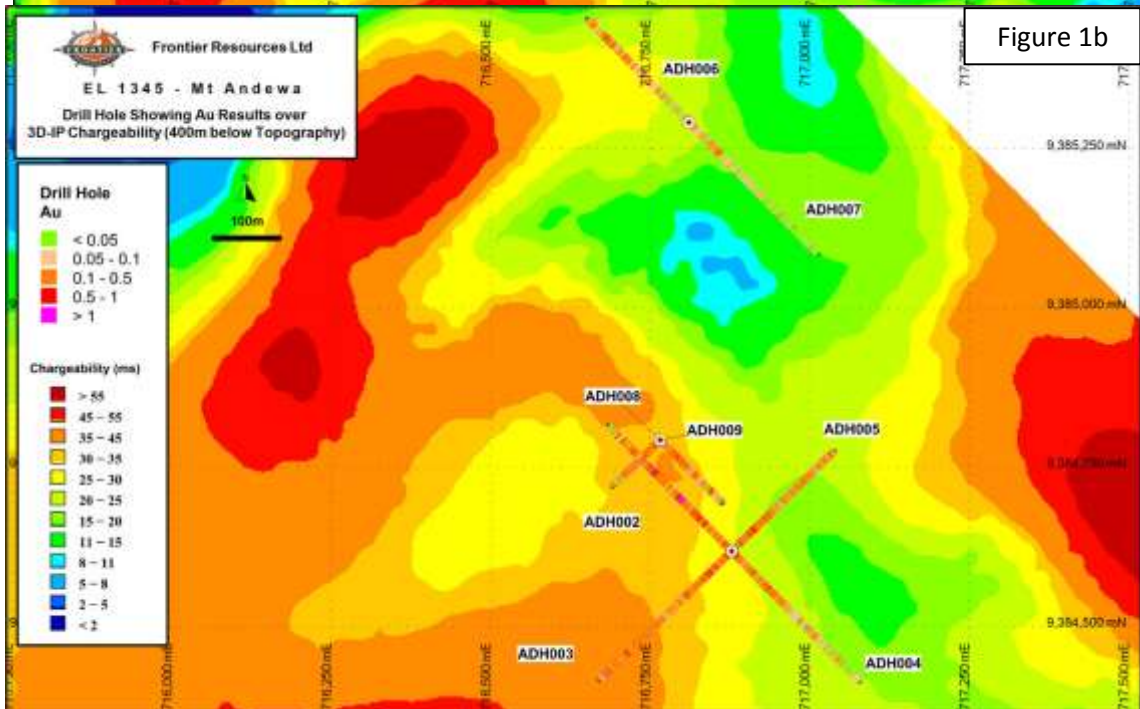
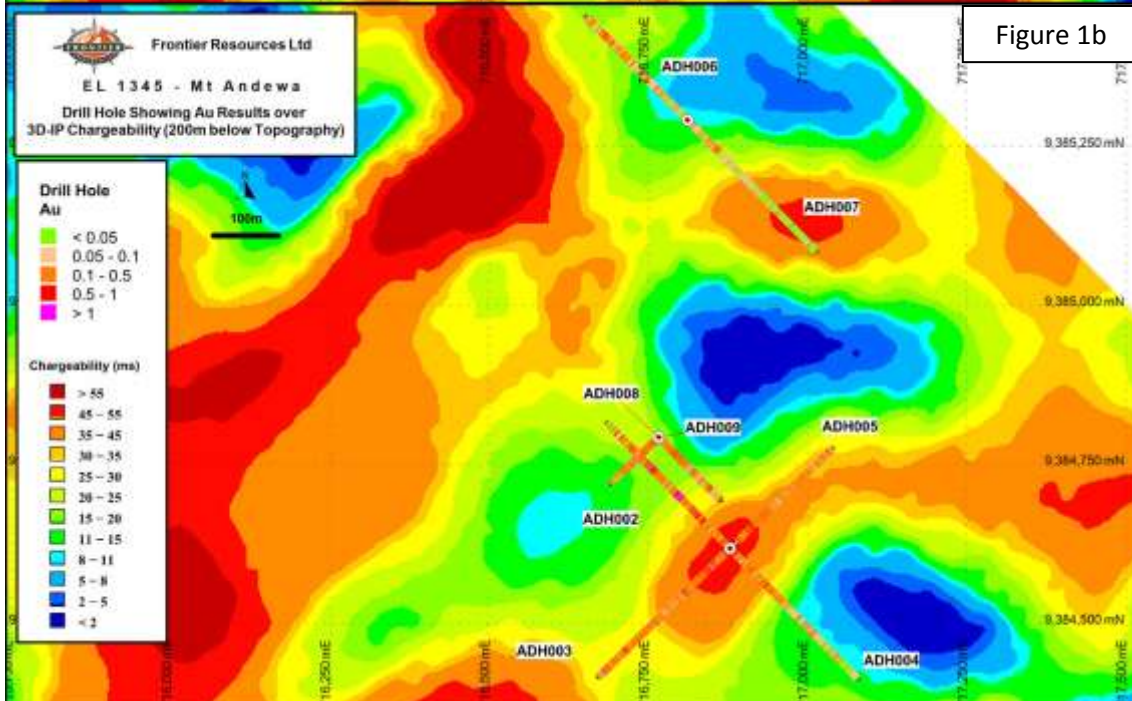
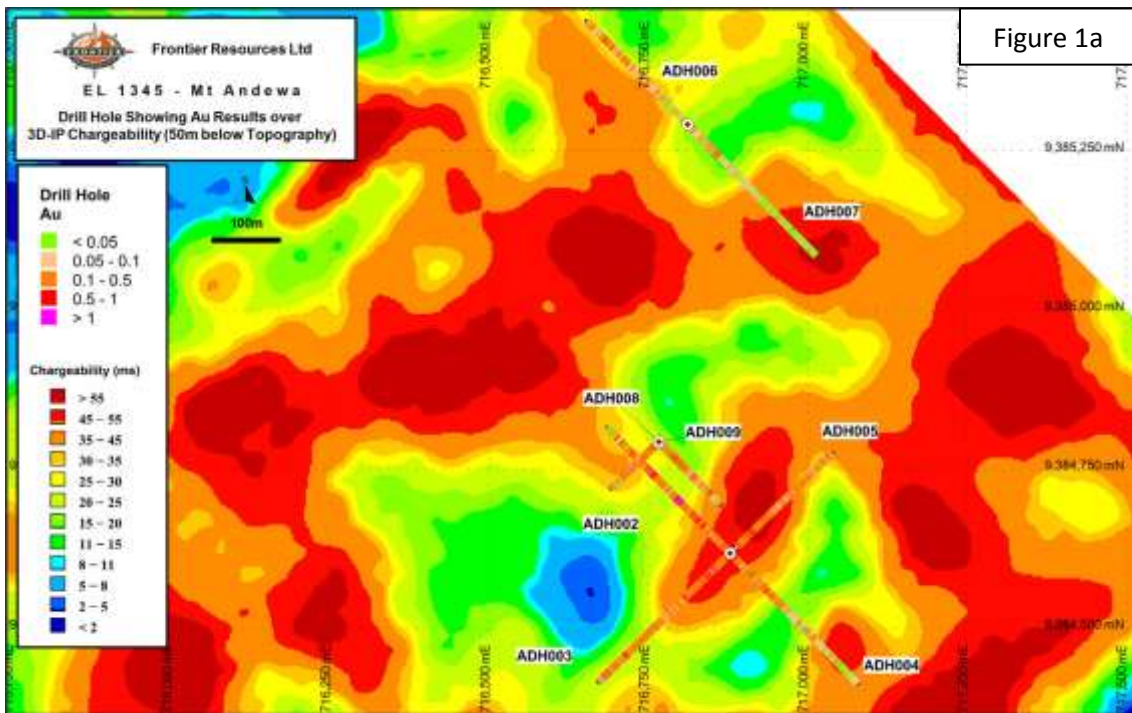
- 1.5m of 4.43 g/t gold (+0.03 % copper + 3 ppm molybdenum)
- 0.20% copper (+ 0.42 g/t gold + 8 ppm molybdenum)
- 148ppm molybdenum (+ 0.33 g/t gold + 0.11% copper)

Table 1. Andewa diamond drill hole gold, copper and moly intercepts

Hole Number	Intercept Length	Gold (g/t)	Copper (%)	Moly. (ppm)	From (m)	To (m)
ADH008	403.5 m	0.27	0.05	5	0.0	403.5
incl.	317.8 m	0.31	0.06	5	7.1	324.9
incl.	36.5 m	0.77	0.08	4	44.5	81.0
incl.	6.4 m	2.75	0.08	22	46.1	52.5
plus	63.0 m	0.27	0.09	13	81.0	144.0
plus	180.9 m	0.26	0.05	3	144.0	324.9
incl.	1.0 m	2.19	0.25	25	159.0	160.0
incl.	1.5 m	2.06	0.23	3	196.5	198.0
incl.	1.0 m	2.94	0.46	2	201.2	202.2
incl.	2.2 m	1.10	0.14	2	226.0	228.2
incl.	1.1 m	1.38	0.08	4	241.6	242.7
plus	14.4 m	0.34	0.10	5	381.2	395.6
ADH009	407.9 m	0.23	0.06	8	0.0	407.9
incl.	53.5 m	0.19	0.07	5	9.0	62.5
plus	58.5 m	0.33	0.09	5	62.5	121.0
plus	64.0 m	0.27	0.05	5	121.0	185.0
plus	9.3 m	0.72	0.14	2	219.7	229.0
plus	7.4 m	0.33	0.24	49	315.8	323.2
plus	3.0 m	1.15	0.05	5	396.0	399.0

Table 2. Andewa Project Diamond Core Drill Hole Information

Drill Hole Number	End of Hole Depth (m)	Prospect	Collar Coordinates			Hole Orientation (degrees)	
			Northing (m)	Easting (m)	RL (masl)	Azimuth (magnetic)	Inclination
ADH 001	398.8	Waiu	9383269	714546	278	118	-50
ADH 002	389.6	Ehgin	9384618	716878	386	309	-45
ADH 003	409.1	Ehgin	9384618	716878	386	219	-45
ADH 004	404.6	Ehgin	9384618	716878	386	129	-45
ADH 005	317.6	Ehgin	9384618	716878	386	39	-45
ADH 006	353.5	NE Ehgin	9385292	716811	489	309	-50
ADH 007	408.4	NE Ehgin	9385292	716811	489	129	-45
ADH 008	403.5	Ehgin	9384793	716766	278	219	-75
ADH 009	407.0	Ehgin	9384793	716766	278	129	-70
ADH010	to ~400m	Waiu	9383269	714546	190	028	-50
ADH 011	700.9	CCZ	9383689	715029	202	309	-45
ADH 012	to ~500m	Waiu	~9383270	~714540	~278	073	-80
NB: Reference datum is AMG Zone 55, AGD 066.							



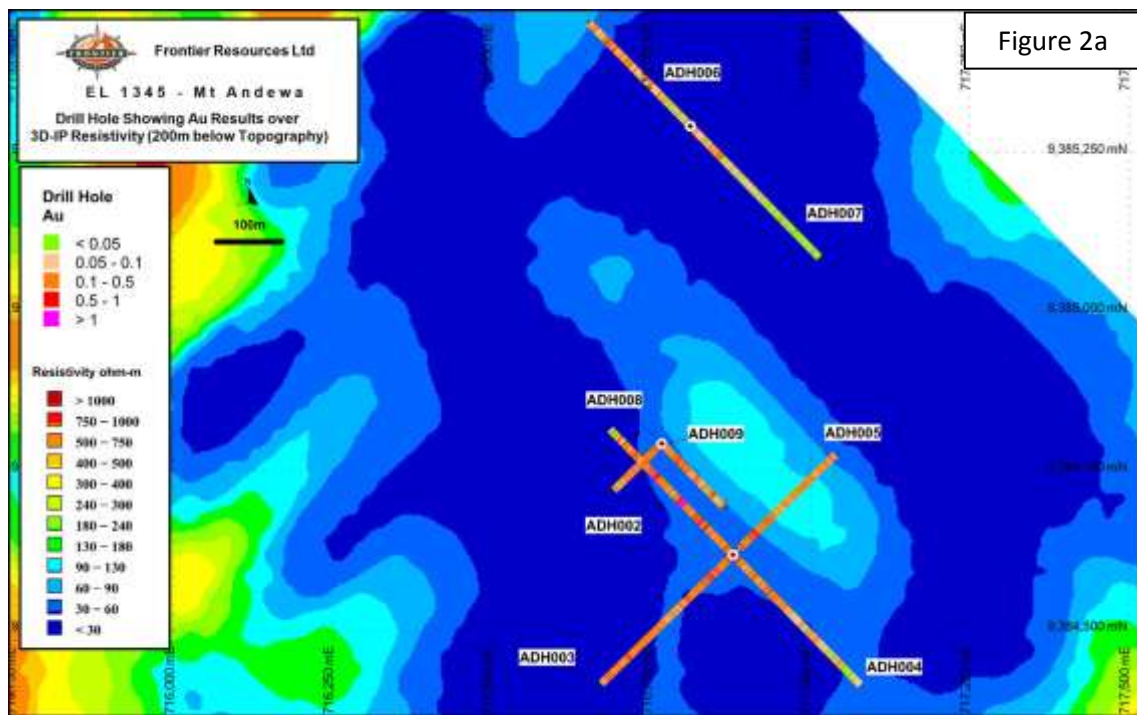


Figure 2a

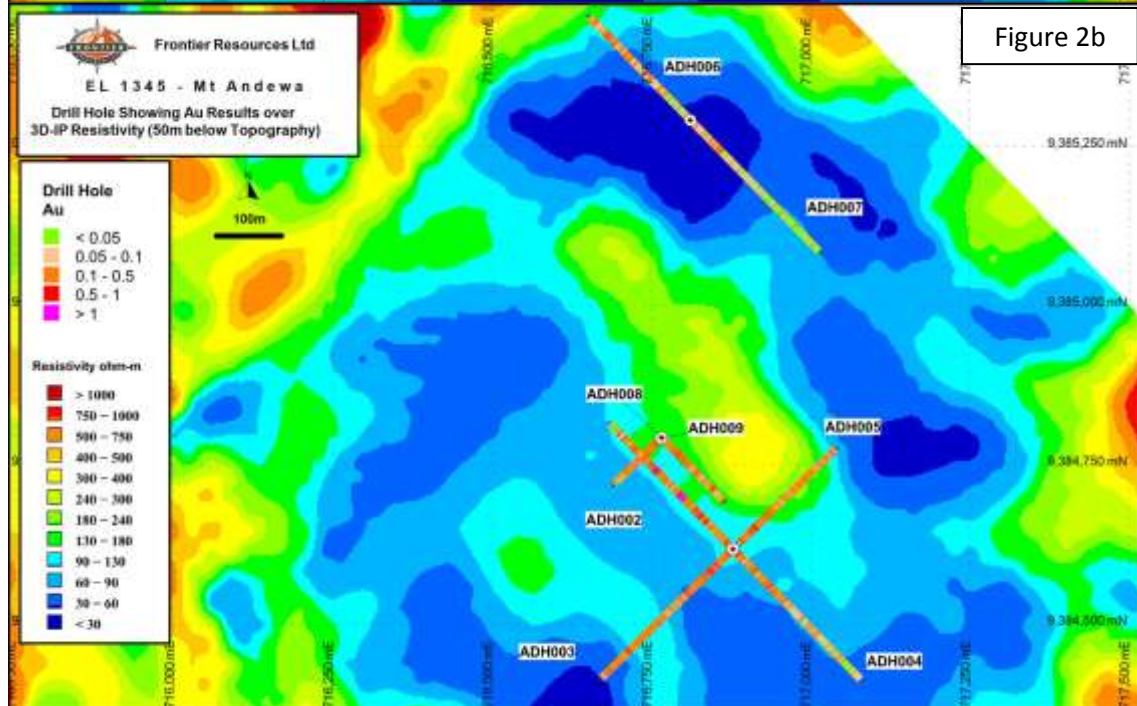


Figure 2b

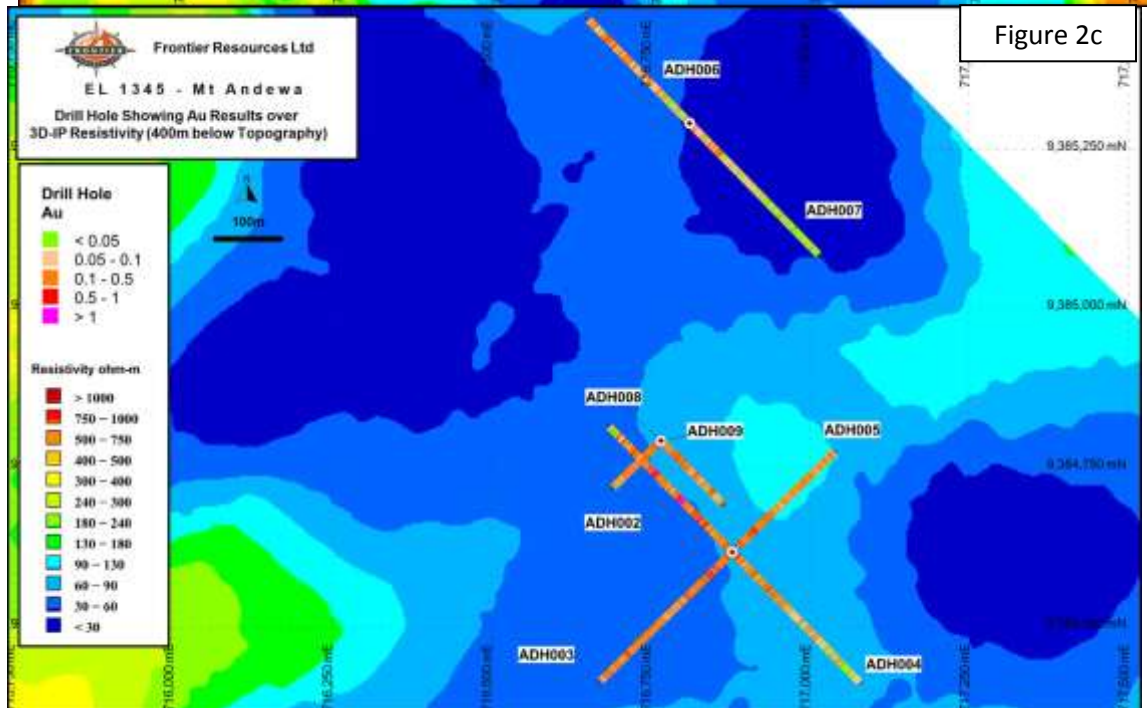


Figure 2c

Peak assays from diamond core drill hole ADH 009 were:

- . 1.0m of 2.0 g/t gold (+ 0.32% copper + 2 ppm molybdenum)
- . 0.9m of 0.53% copper (with 0.40 g/ t gold + 102 ppm molybdenum)
- . 2.4m of 387 ppm molybdenum (+ 0.11% copper)
- . 1.0m of 13.4 g/t silver (+ 1.85 g/t gold + 0.10% copper)

The last sample in hole ADH 009 assayed 1.0m of 0.55 g/t gold + 0.11% copper (from 406 to 407m downhole at approx. 390m vertically below the surface).

Figures 1a-c and 2a-c show the Ehgin drill hole locations relative to chargeability and resistivity anomalies at 50m, 200m and 400m below topography, respectively.

Figure 3 shows the locations of all holes drilled at Andewa on a resistivity base (at 50m below topography) overlain by gold in soil geochemistry.

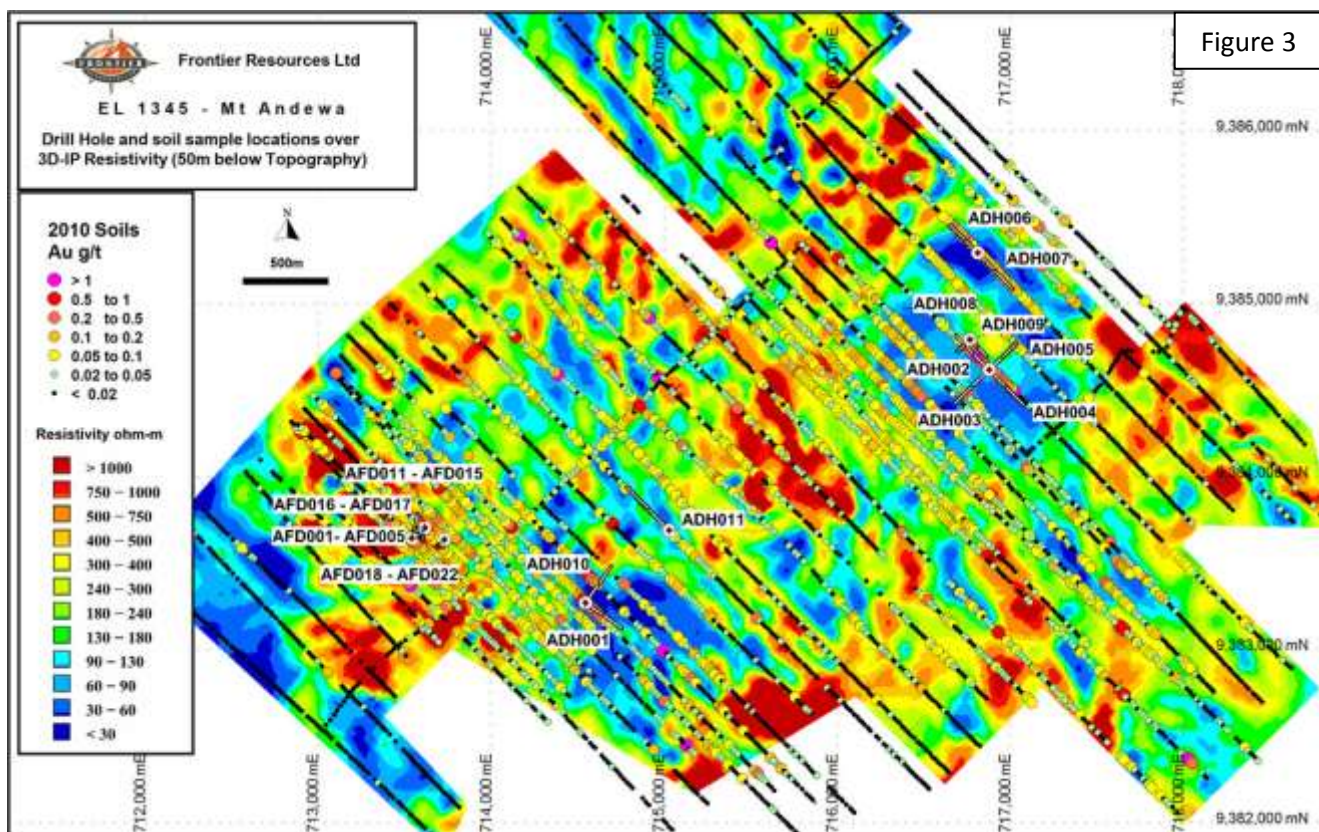


Figure 3

Refer to ASX releases dated 28/9/2005, 24/10/2006, 31/7/2007, 25/9/2007, 12/10/2007, 29/10/2007, 31/3/2008, 9/5/2008, 22/0/2008, 20/11/2009, 23/7/2010, 26/11/2010, 22/11/10, 18/02/2011, 22/02/2011, 18/03/2011, 28/03/2011, 1/7/2011, 8/7/2011, 28/10/2011, 11/10/2011, 1/9/2011, 21/11/2011, 19/1/2011 for detailed information relating to the Andewa Project.

For additional information relating to Frontier Resources, please visit the Company’s website at www.frontierresources.com.au or feel free to contact me.

FRONTIER RESOURCES LTD

P.A.McNeil, M.Sc.
CHAIRMAN / MANAGING DIRECTOR

The information in this report that relates to Exploration Results and Mineral Resources is based on information compiled by, or compiled under the supervision of Peter A. McNeil - Member of the Aust. Inst. of Geoscientists. Peter McNeil is the Managing Director of Frontier Resources, who consults to the Company. Peter McNeil has sufficient experience which is relevant to the type of mineralisation and type of deposit under consideration to qualify as Competent Person as defined in the 2004 Edition of the Australasian Code of Reporting Exploration Results, Mineral Resources and Ore Resources. Peter McNeil consents to the inclusion in the report of the matters based on the information in the form and context in which it appears.