



ADDRESS
Unit 5, Ground Floor
1 Centro Ave, Subiaco
WA, 6005 Australia

PHONE
+61 (8) 9486 4036
ABN
96 095 684 389

EMAIL
pmcneil@frontierresources.com.au
WEBSITE
www.frontierresources.com.au

ASX: FNT

Market Announcements Platform

30th March 2017

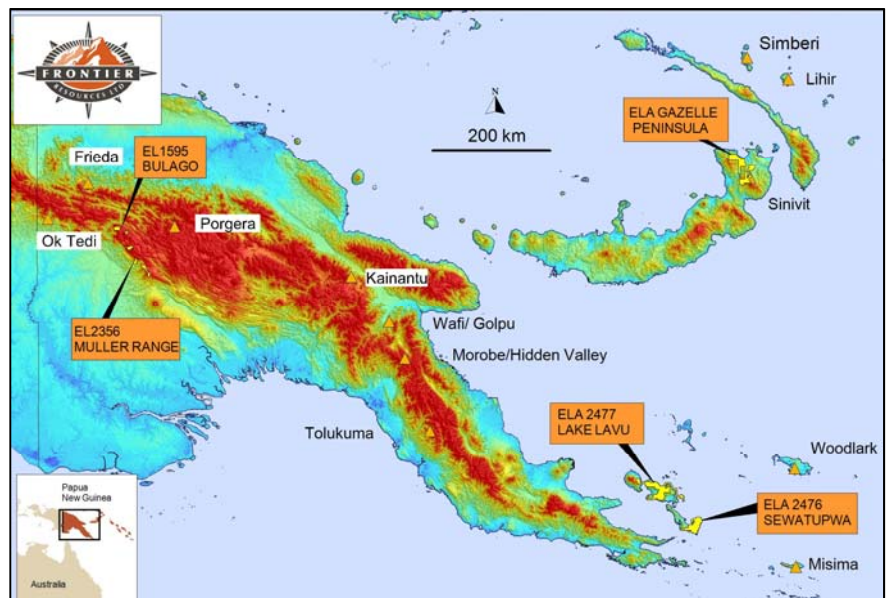
Muller Reconnaissance Program Completed

Frontier Resources Limited (**Frontier**) is pleased to announce that the Muller (EL 2356) reconnaissance exploration program has been completed in Hela Province, Papua New Guinea. EL 2356 is located along regional strike to the east of the Bulago EL, where Frontier is currently drilling.

A total of 14 rock samples were collected and are awaiting shipping from the Bulago camp. Frontier's geologist Ken Igara assisted with the initial recon for Kennecott at Tinga 25 years ago and expressed renewed excitement about (his perception) the high prospectivity of the region to host a porphyry copper deposit.

The recon program lasted for 3 weeks, as only two 'lapuns' (older men) were available to assist, when we had planned on having 8 men (the young men were elsewhere or working for the LNG companies).

I will meet with Tinga landowners in late April, to discuss the normal issues related to entering a new area in PNG and tell them about Frontier and our work program, so we can establish a relationship. I plan to take the 2 'major' company's representatives (possible JV partners) to site in late-April and early-May, respectively.



Primary exploration targets at Tinga are porphyry copper-gold, skarn gold —base metals, epithermal higher grade gold + silver mineralisation and breccia hosted base metal stockwork veining.

Exploration results (released to the ASX 26/4/2016) at Tinga by previous explorers include:

- Strong gold in soil anomalies (90m of 2.14 g/t gold, to a high of 6.09 g/t gold).
- Strong stratabound base metal skarn lead-zinc in soil anomalies.
- A soil-rock chip anomaly (>30 ppm copper and >0.1 g/t gold) coincident with phyllic-altered diorite.
- Gold in float rock (30 g/t gold, 12 g/t gold and 4.9 g/t gold).
- Mineralised outcrop rock (to 1.1g/t gold +0.26% copper +0.29% lead +8.8% zinc and 3.72g/t gold).
- Pyrite altered quartzite outcrops (to 0.97 g/t gold + 58 g/t silver + 0.24% copper).
- Gold in outcrop channel sampling (average for 20 non-continuous samples of 1.18g/t gold).
- Polymetallic massive sulphide in potassically+phyllicly altered diorite (10m of 3.3 g/t gold + 0.12% copper + 0.8% lead+ 1.9% zinc).
- Brecciated massive sulphide magnetite skarn at the andesite porphyry /limestone contact (3m channel of 1.17 g/t gold + 33 g/t silver + 0.16% copper + 1.80% lead + 3.50% zinc).

For additional information please visit the website at www.frontierresources.com.au.

FRONTIER RESOURCES LTD

A handwritten signature in black ink, appearing to read 'P.A. McNeil', written in a cursive style.

P.A. McNeil, M.Sc., MAIG
Chairman and Managing Director

Competent Person Statement:

The information in this report that relates to Exploration Results is based on information compiled by Peter A. McNeil - Member of the Aust. Inst. of Geoscientists. Peter McNeil is the Chairman/Managing Director of Frontier Resources, who consults to the Company. Peter McNeil has sufficient experience which is relevant to the type of mineralisation and type of deposit under consideration to qualify as Competent Person as defined in the 2012 Edition of the Australasian Code of Reporting Exploration Results, Mineral Resources and Ore Resources. Peter McNeil consents to the inclusion in the report of the matters based on the information in the form and context in which it appears.